

The Bee Mindful Top-Bar Hive™ Plans

www.Bee-Mindful.com



This standardized horizontal top-bar hive was designed by Les Crowder and Nathalie B. of Bee Mindful, LLC under the name of “**The Bee Mindful Top-Bar Hive™**”

Copyright to the drawings for “**The Bee Mindful Top-Bar Hive™**” here below are retained by **Bee Mindful, LLC**, who hereby grants permission to fellow beekeepers to freely duplicate and distribute said drawings in printed and electronic form provided that:

1. Distributed plans are not sold but distributed free of charge
2. This copyright notice is retained and included in all distributions
3. Printed and electronic copies of this notice and these drawings are not altered in any manner other than handwritten markings.

In addition, for all hives or hive kits built to the basic dimensions as listed on the dimension pages of these specs (same angle/width/bar dimensions and all variable lengths of side walls or number of partitions), credit be given clearly and unequivocally to **Bee Mindful, LLC** as being a “**Bee Mindful Top-Bar Hive**” before being posted online, sold or distributed in any way. Our goal is to make these simple hives available to as many people as possible, even when we are not selling them ourselves. In exchange, all we ask for is the credit for their design and your support to spread the word to others about horizontal top-bar hive beekeeping.



Questions and suggestions for improvements may be submitted to Bee Mindful, LLC at www.Bee-Mindful.com or BeeMindfulHoneyFarms@gmail.com

The Bee Mindful Top-Bar Hive™ Plans

www.Bee-Mindful.com

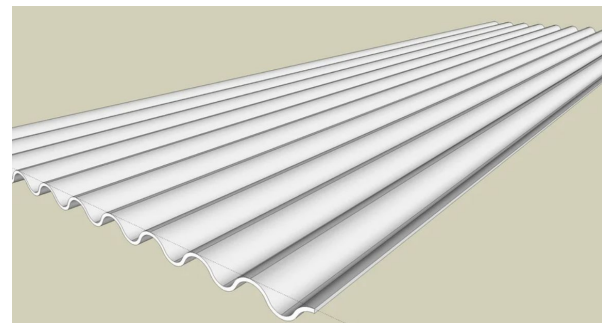
BASIC DESIGN: Single Bee Mindful Top-Bar Hive™



**FREE PLANS @
PLANS GRATUITS @**

www.Bee-Mindful.com/plans

Copyright 2018© Bee Mindful, LLC

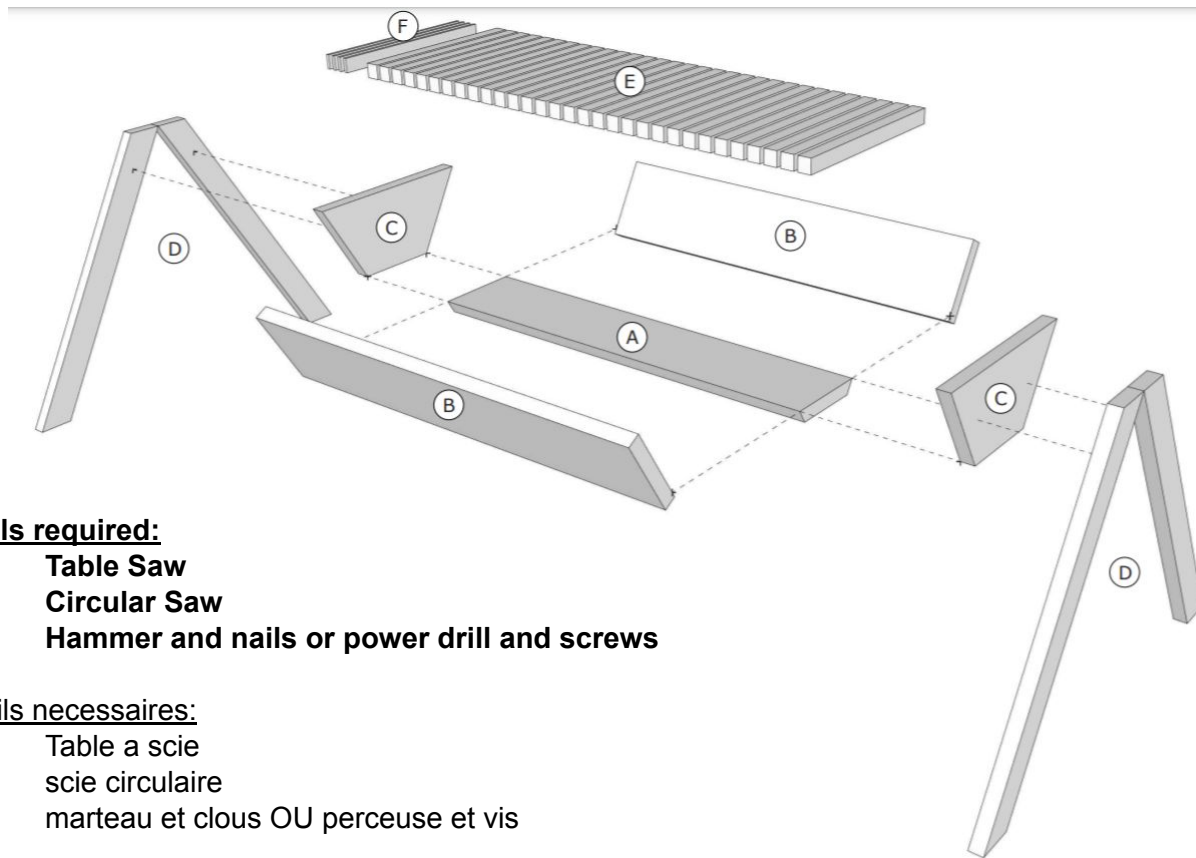


**This hive requires a rain cover,
such as corrugated metal**

Cette ruche nécessite une
protection contre la pluie, comme
par exemple de la tôle ondulée

The Bee Mindful Top-Bar Hive™ Plans

www.Bee-Mindful.com



Tools required:

- Table Saw
- Circular Saw
- Hammer and nails or power drill and screws

Outils nécessaires:

- Table à scie
- scie circulaire
- marteau et clous OU perceuse et vis

Unless otherwise specified, all angled cuts are at 30°

Tous les angles non droits sont coupés à 30°



The Bee Mindful Top-Bar Hive™ Plans

www.Bee-Mindful.com

Cutting List (liste de coupe)

Based on US dimensional lumber of 2in x 10in (actual size = 1-1/2in x 9-1/4in)

Base sur les dimensions de planches américaines de 3.8cm x 23.5cm

ITEM	NAME	QUANTITY	DIMENSIONS	THICKNESS (variable)
A	Bottom board	1	centimeters: 23.5 x 119.4 inches: 9-1/4 x 47-1/64	centimeters: 3.8 inches: 1.5
B	Wall	2	centimeters: 23.5 x 119.4 inches: 9-1/4 x 47-1/64	
C	End piece	2*	centimeters: 50.6 x 23.5 inches: 19-15/16 x 9-1/4	
D	Leg	4	centimeters: 10.3 x 100 inches: 4-1/16 x 39-3/8	the thicker, the better
E	Bar	31	centimeters: 3.5** x 48.3 inches: 1-3/8** x 19-1/64	
F	Spacer	4	centimeters: 1 x 48.3 inches: 3/8 x 19-1/64	

* make more end pieces and use as partitions for additional colonies - En couper d'avantage et les utiliser comme partitions pour davantage de colonies

** bee space may vary depending on your bee sub-species - adapt accordingly - varie en fonction de l'espace entre rayons requis pour vos abeilles



BEE MINDFUL

HAPPY BEES, NATURALLY

Item = élément

Name = nom

Quantity = quantité

Thickness = épaisseur

Bottom board = plancher

Wall = paroi latérale

End piece = extrémité

Leg = jambe

Bar = barrette

Spacer = ajusteur



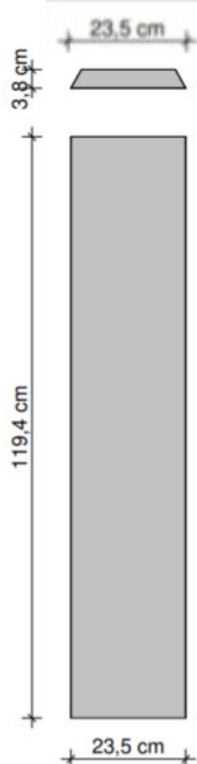
The Bee Mindful Top-Bar Hive™ Plans

www.Bee-Mindful.com

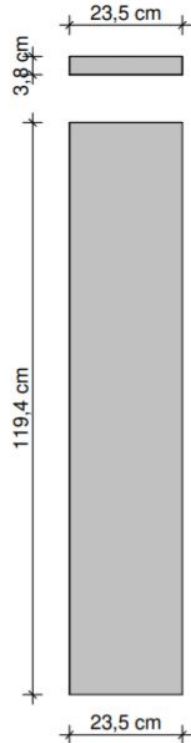


A - Bottom board - x1

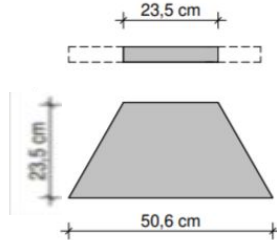
Beveled at 30° on the long edge
Biseauté à 30° sur la longueur



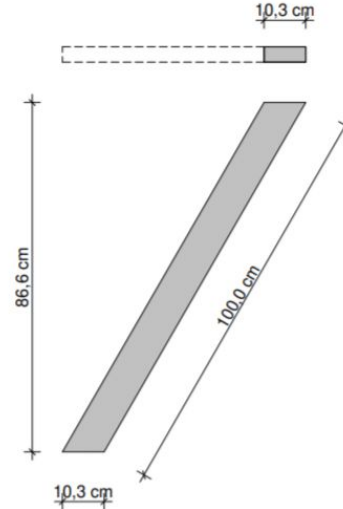
B - Wall - x2



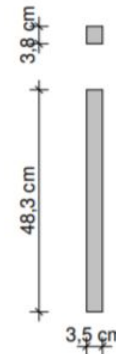
C - End piece - x2



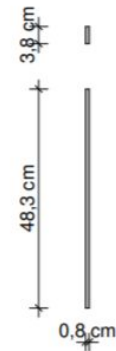
D - Leg - x4



E - Bar piece - x31



F - Spacer - x4



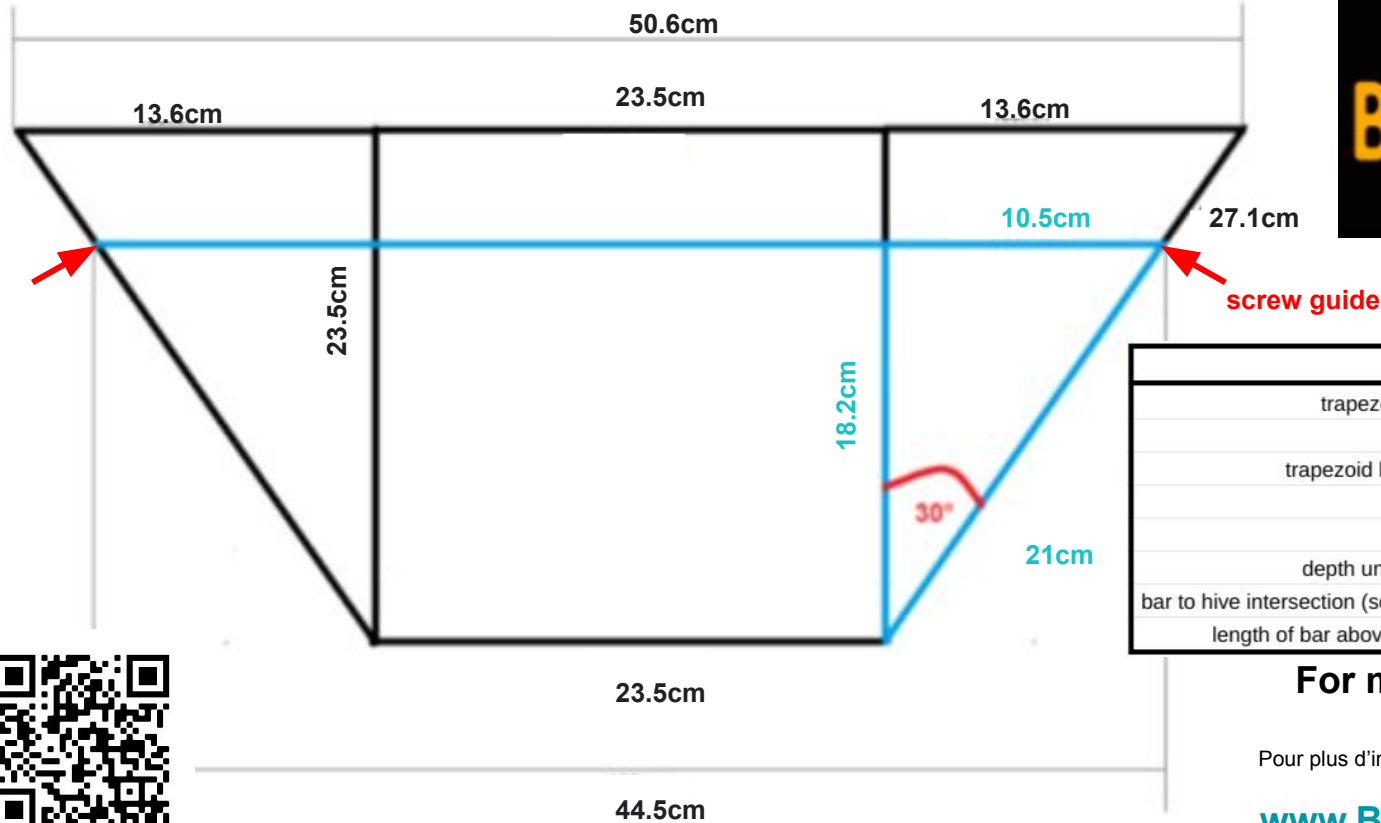
For more information on Top-Bar Hives:

Pour plus d'information sur les Ruches Horizontales à Barrettes Supérieures

www.Bee-Mindful.com/plans

The Bee Mindful Top-Bar Hive™ Plans

www.Bee-Mindful.com



	Centimeters	Inches
trapezoid top width	50.6cm	19-15/16
	13.6cm	5-3/8
trapezoid bottom width	23.5cm	9-1/4
	10.5cm	4-1/8
	27.1cm	10-11/16
depth under top-bars	18.2cm	7-3/16
bar to hive intersection (screw guides)	21cm	8-1/4
length of bar above hive cavity	44.5cm	17-1/2

**For more information on
Top-Bar Hives:**

Pour plus d'information sur les Ruches Horizontales à
Barrettes Supérieures

www.Bee-Mindful.com/plans

The Bee Mindful Top-Bar Hive™ Plans

www.Bee-Mindful.com

INTERNAL VOLUME CALCULATIONS

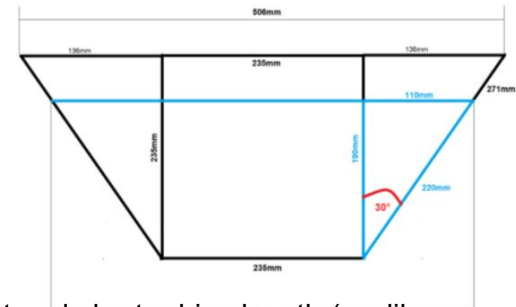
- Surface of blue trapezoid = height * (short base + long base) / 2
= 18.2cm * (23.5cm + 44.5cm) / 2
= 618.8cm²
- Volume V = surface of trapezoid * internal length of cavity (for **48"** long hives)
= 618.8cm² * **114.3cm** = 70 729 cm³
≈ **71 litres** (about the volume of a 10F Deep + 10F Medium)

Important Considerations:

- The internal volume of the hive will vary in function of its length.
- To make Top-Bar Hive NUCs, follow the same instructions but use 1" lumber for lighter weight and shorter hive length (we like our NUCs to be long enough to hold about 9-10 bars so they can overwinter in them if need be and don't run out of space too quickly, but they could be longer/shorter based on your specific needs.
- To build Queen castles and/or multiple cavity Top-Bar Hives, simply add additional partitions and entrances for each - we run double or triple (sometimes quadruple) Top-Bar Hives for Ag Exemption services
- We recommend making Top Bars 19in long so you have about 3/4in overhang on each side and will fit into Lang equipment if needed - alternatively, they may be even longer if you don't plan on using them in Lang equipment

go to https://en.wikipedia.org/wiki/Langstroth_hive for Langstroth Hive dimensions and volumes

Copyright 2018© Bee Mindful, LLC



The Bee Mindful Top-Bar Hive™ Plans

www.Bee-Mindful.com



ADDITIONAL SUGGESTIONS:

Easy Peasy Lang-to-Top-Bar Hive ADAPTER™

Anyone who now wants to convert a Langstroth to a Top-Bar Hive may do so with this easy method, as long as the legs or stands (cinder blocks for example) are under the hive... Cardboard or Corrugated NUCs are easy to work with, but you could also do that with wooden nucs or even full boxes (with a longer "table" made out of a board screwed under the bottom of the hive) ...

Langstroth frames are pushed flush against the end of the top bar hive so bee space is respected.

Once they have moved brood to the new combs in the TBH (cut a plastic queen excluder to fit inbetween to speed up the process) and they have enough resources, you can remove the Langstroth nuc and frames, screw the hive end back on, and voila!!



- 1 - Unscrew the end piece
- 2,3 - Use the end piece as a shelf, screwing it in place
- 4,5 - Put the Lang NUC on the shelf, flush with the TBH
- 6 - Open the Lang NUC to the shape of the TBH
- 7 - Push the Lang frames flush with the TBH
- 8 - Place the top-bars on the TBH, use tape if needed
- 9 - Add the TBH rain cover (this is a double Lang conversion using a double TBH))

